

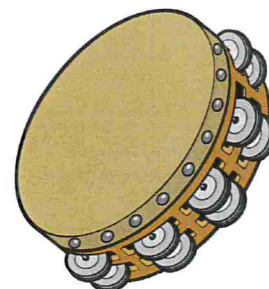


NEWSLETTER

Friday 17th January 2025

WEEKLY CLASS FOCUS

The topic in Tambourine Class this half term is “land, sea and sky”. The students are looking at the different animals that live in these areas and the differences between them. For example, do they have legs, fins, wings, fur, feathers or scales. Each week they are focusing on a different animal and so far the children have looked at land animals, specifically a lion and bear.



In Literacy the class is learning facts about the animals and writing fact files about their focus animal. By the end of the half term each child will have a mini encyclopaedia of the animals we have learnt about.

In The World the students are sorting, comparing and labelling animals and in Art they are using clay to make 3D models of an animal and making habitats out of junk modelling. The clay has been a huge hit with all the children, they have loved exploring the clay in different ways and being supported to make the different parts of the animal and piece them altogether.





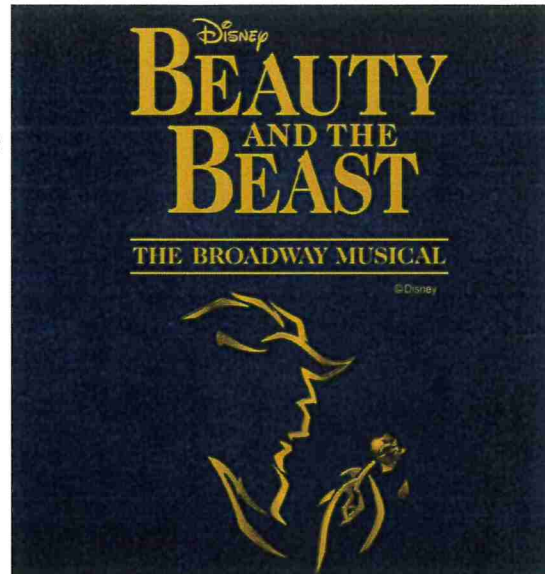
BEAUTY & THE BEAST

Stuck for something to do over the half term break which will be with us before we know it?

Arlington Arts in Newbury are holding a relaxed performance of Disney's Beauty and the Beast on **Sunday 16th February at 2pm.** The performance is designed to be accessible for all, with lights up, sound lowered, and the flexibility for audience members to come and go as they wish.

There will also be the availability for VIP experiences, i.e. meeting the characters, take photos and try the themed treats (including the famous "grey stuff"!).

Tickets are available at : <https://arlingtonarts.ticketsolve.com/ticketbooth/shows/873650560>

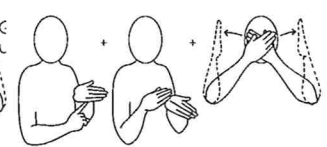
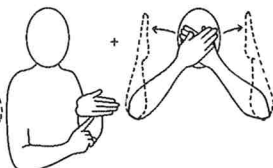
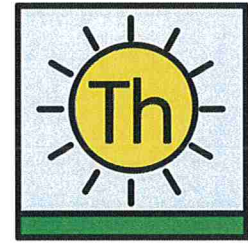
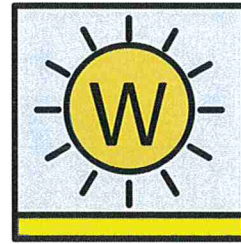
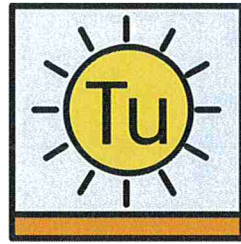
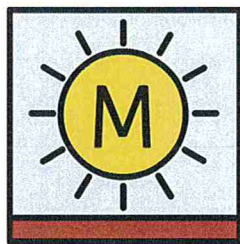


SCHOOL LUNCHES

Thank you to everyone for pulling together to sort out the school lunch dilemma today. Obviously the Portway kitchen had to close down for health and safety reasons beyond their control and were only informed themselves of the situation in the early afternoon yesterday. They promptly contacted us, as well as a number of other schools, to put a solution in place. We are hoping the situation will be rectified by Monday morning and the lunches will be provided in the usual way next week.

THANK YOU

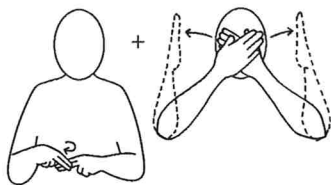
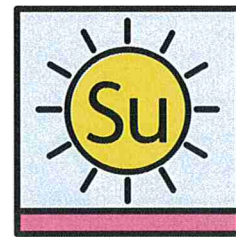
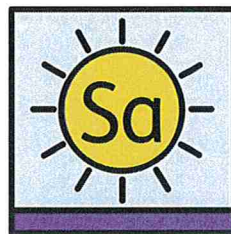
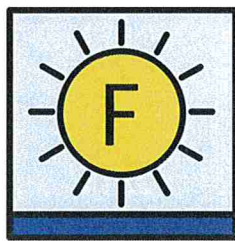
SIGNS AND SYMBOLS OF THE WEEK



Monday

Tuesday

Wednesday



Friday

Saturday

Sunday

DIARY DATES — SPRING TERM (1) 2025

JANUARY

- 21st Boccia & NAK Tournament (Cello)
- 23rd FE Disco, Orange Rooms, Southampton
- 24th Burns Day Celebration—wear tartan if you can!
- 27th Theme Week (2 of 3) —Video & Film



FEBRUARY

- 4th ZooLab visit
- 4th Full Governors' Meeting
- 11th Marwell Zoo trip no.1 (Lower School)
- 12th Marwell Zoo trip no.2 (Lower School)
- 14th INSET DAY (FE only)
- 26th Mercury House Trip (moved from 11.02.25)

SUPERSTAR OF THE WEEK

The following students have been awarded the Class Star of the Week Award:

Chimes	- Olly
Drum	- Charlotte
Maracas	- Freddie
Tambourine	- Shelby
Triangle	- Alfie
Trumpet	- Danny
Oboe	- Amelia
Banjo	- Chloe
Cello	- Summer



The School Superstar of the Week is ...AMELIA!!

Amelia is a lively young lady who likes to get involved—it's like having an extra member of staff in the classroom. She has the job of collecting Oboe's lunches which she undertakes very responsibly and likes to run errands for others. Amelia knows most of what is going on around her—because she makes it her business to know. Her likes are varied—Paw Patrol, sausages and baked beans. She has a great sense of humour and understands staff are winding her up when threatening to send her to another class. She has a good "witch's laugh". Amelia is becoming very independent when visiting Tesco café and is working hard on reading and phonics.

FE PPICC CHAMPIONS

(Personal, Physical, Independence, Cognitive, Communication)

CHAMPIONS



Jorge and Tim

