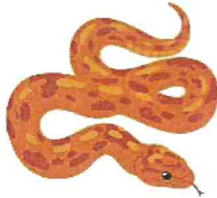




NEWSLETTER

Friday 30th January 2026



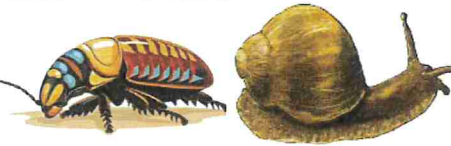
ZOOLAB



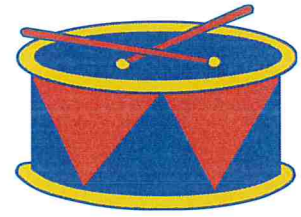
Kieran Chaney came to the school on Tuesday, bringing along his many friends from ZooLab.

They included Shelby the giant snail, Freddie the tree frog, Irn-Bru the corn snake, Sugar Plum the tarantula and lots of hissing cockroaches who were all called Charlie. The students visited the school hall where they were educated in the habitat, feeding, and proper care of these creatures. Many questions were asked and Kieran who very enthusiastic about his task was keen to give as much information he could. The most exciting part was the hands-on experience many of the students and some staff, felt brave enough to do.





WEEKLY CLASS FOCUS



The Drum class topic this half term is 'India'. Their story is 'The Magic Carpet Ride to India' and they are having fun riding carpet tiles up into the clouds before landing in a variety of Indian locations.

They have been exploring props linked to these locations including bells at the temple which are very popular, especially with Zach! They are also practising their matching skills by matching pictures or symbols of items in the story. Sam is doing really well at naming some of the objects using an ALD whilst Chloe and Órlaith are making an 'I see' sentence.

In the World sessions they have looked at what animals and clothes can be found in India. Charlotte loved looking carefully at the animals and was able to pick out all the English farm animals from the wild Indian animals. Elana has been very interested in the pattern matching game that shows some of the patterns seen on Indian clothes. They still have Indian music and food to look forward to.

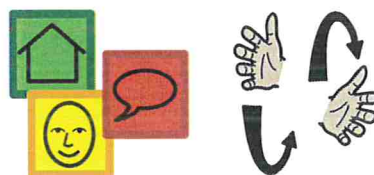




In Art the focus is textiles, so they explored collaging with materials, giving their milk bottle elephant a blanket. They also used the materials to make peg paintbrushes to paint masks. This week they will get a fabric scarf to finish them off.

In PE they are extending their rolling and crawling exercises from last term by going forwards and backwards in different types of crawling, as well as over and under the adults. It seems as though that the favourite part of the lesson is when the adults crawl and the children get to ride on their backs! The children are also becoming very good at joining in the cool down (stretch up, touch your toes, sit down, breathe in, blow out) with help or independently, copying the actions on the whiteboard.

SIGNS AND SYMBOLS OF THE WEEK



<p>Finger spell 'F' then 'V'</p>			<p>Hands alternately move towards and away from body</p>
February	family	friend	share
<p>Har and faci</p>		<p>Hands make alternate outward movement, twisting at wrist. Direct towards appropriate people</p>	
group	together	take turns	change

SPRING TERM 2026

FEBRUARY

- 2nd Eastleigh Theatre (partial Chimes)
- 3rd The Point Theatre, Eastleigh (FE)
- 3rd Governors' Curriculum Meeting (1pm)
- 3rd Full Governors' Meeting (4pm)
- 13th Ice-skating (Chimes)
- 13th **INSET DAY (FE only)**
- 16-20th **HALF TERM**
- 23rd **INSET DAY (School & FE)**
- 26th Wheelpower Festival (FE)



MARCH

- 6th Dressing Up World Book Day
- 13th Immunisations Catch up (yrs 9-11)
- 17th Full Governors' Meeting (4pm)

BIRTHDAYS CELEBRATED THIS WEEK WERE....

- Jack H, Drum 5 yrs old
- Samyok, Maracas 10 yrs old



SUPERSTAR OF THE WEEK

The following students have been awarded the Class Star of the Week Award

Chimes	- Phoebe
Drum	- Orlaith
Maracas	- Frankie
Tambourine	- Noah
Triangle	- Archie
Trumpet	- Destiny
Oboe	- Neil
Banjo	- Tiger
Harp	- Kobi
Cello	- William



The School Superstar of the Week is FRANKIE!!!

Frankie is becoming a young lady with a sassy personality. She knows what she wants and usually gets it by using her cheeky laugh. Her favourite sessions are spent in the Sensory Room and Hydropool. Cooking is another lesson she finds enjoyable, particularly when tasting the end product. Frankie has amazing eye contact and enjoys interacting with staff, especially those who give her a ribbon to play with. She is also renowned for her love of bubbles which can be followed down the corridor to where she is.

FE PPICC CHAMPIONS

(Personal, Physical, Independence, Cognitive, Communication)

CHAMPIONS



Jamie
and
Sofia



Launching 2026



Parents Empowered by
Andover Schools

The PEAS group are Family Support and Pastoral Support Workers working in Andover town schools. Covering local primary, secondary and special education, we're venturing out into the community to offer impartial support, advice and guidance to parents/carers on a number of family related issues.

Keep an eye out for:

'PEAS @ ACE' – our new drop in at Andover Community Engage (ACE), Bridge Street.

Parenting courses including Nurturing Programme & Talking Teens

Themed workshops on family topics that matter to you

Plus much more...

All Andover town schools are part of our PEAS network – you can contact us through any school office



'If it takes a village to raise a child, it takes a village to support that child's parent'

- Ann Douglas -

**Are you a parent/carer with pre-school or school-age children?
Are you looking for a bit of support from a friendly face?**



Parents Empowered by
Andover Schools

Selected Friday's

When: 09.30 - 11.30

Where: 13-17 Bridge St,
Andover

@ ACE

ANDOVER COMMUNITY ENGAGE

Family Support Workers from PEAS will be running a parent drop-in at ACE on Bridge Street, Andover Town Centre, on the following dates:

6 & 27 February, 20 March, 17 April,

01 May, 05 June, 10 July

For anything family related, if we can't help you directly, we can signpost you to someone who can.

No need to book

Just stop by and grab a cuppa.

